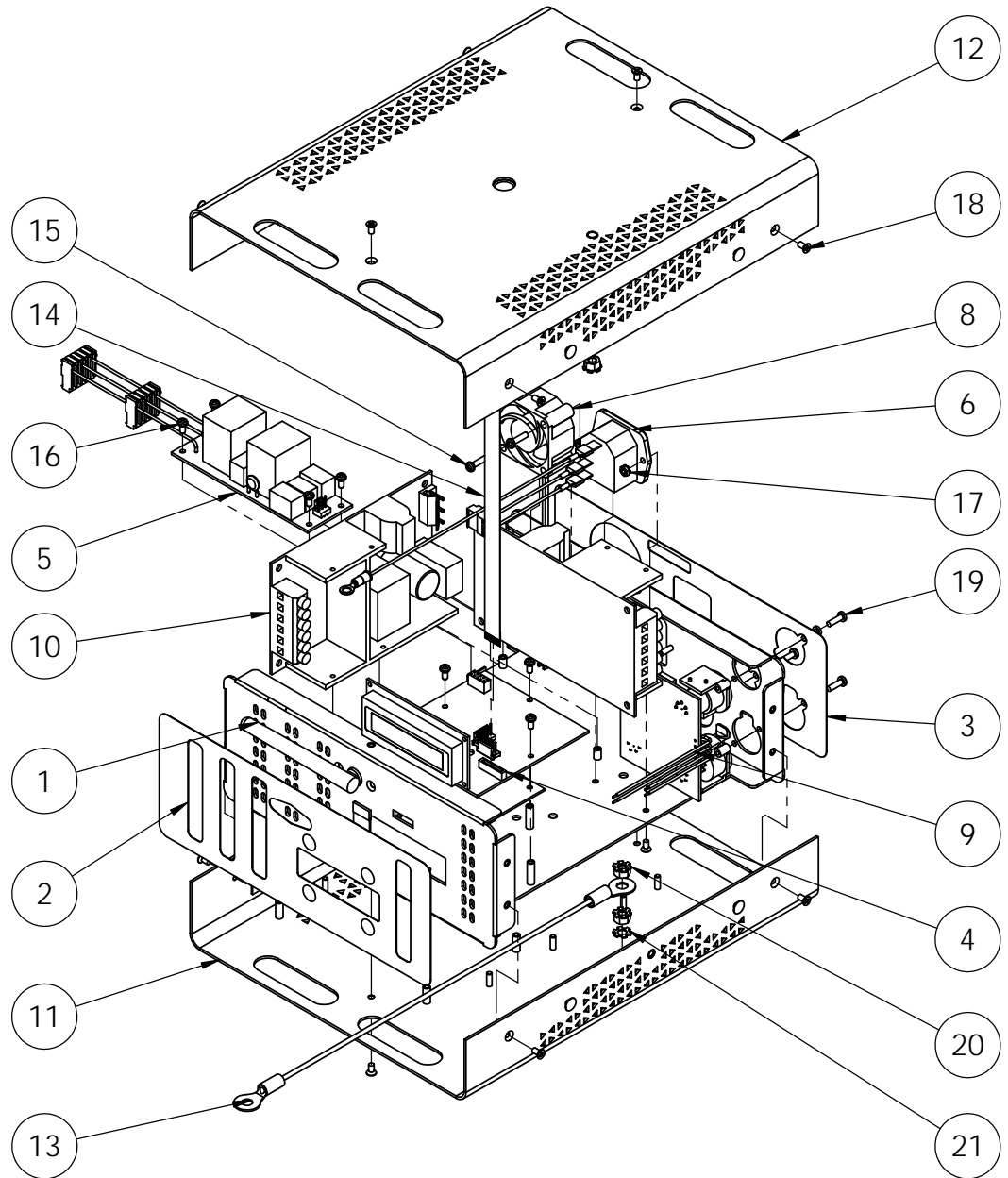


ITEM NO.	PART NUMBER	DESCRIPTION	QTY.
1	636-0025	PLATE INSERT PSU-300	1
2	636-0022	OVERLAY FRONT PSU300	1
3	636-0023	OVERLAY BACK PSU300	1
4	636-0013	PCB COMPLETE ADDRESSING COMPACT PSU	1
5	639-0102	PCB COMPLETE FILTER CARWASH	1
6	636-0300	HARNES AC INPUT PS300	1
7	900-2151	FUSE SLOW 250VAC 4A 5X20	2
8	100-0032	FAN ASSEMBLY PSU-30	1
9	636-0100	PCB COMPLETE XLR'S PSU300	1
10	900-2108	POWER SUPPLY 24VDC 120W SBU-120-108 SCREW TERM	2
11	134-0010	BASE WELDED S/A MAGIC BOX	1
12	134-0008	COVER TOP MAGIC BOX	1
13	139-0013	GROUND CHASSIS TO COVER PSU-08	1
14	900-2112	CABLE FLAT FLEX 12POS 1MM 10"	1
15	430-1212-0	SCREW M3x12 PH PLPS BLK	2
16	430-1206-0	SCREW M3x6 PH PLPS BLK	7
17	430-3203-0	NUT HEX M3 COMBI BIK	2
18	430-1106-0	SCREW M3x6 FH PLPS BLK	16
19	429-1208-9	SCREW M2.9x8 PH PZDRV BLK PLASTITE	6
20	450-3205-1	NUT HEX M5 COMBI Zn	3
21	450-2609-1	WASHER LOCK M5 EXT TOOTH Zn	1
22	900-2072	W-DMX MICRO G4 CALIBRATED	1
23	900-2070	ANTENNA RF OMNI 2DBi RP-SMA MALE	1
24	636-0006	BRACKET ANTENA FORCE COMPACT PSU15	1
25	900-2071	CABLE RF 40 cm PCB MCX - CHASSIS RP-SMA	1



# PSU300

**Disclaimer:** Dimensions and illustrative drawings contained herein are accurate to the company's knowledge at the time of printing, however specifications are subject to change without notice