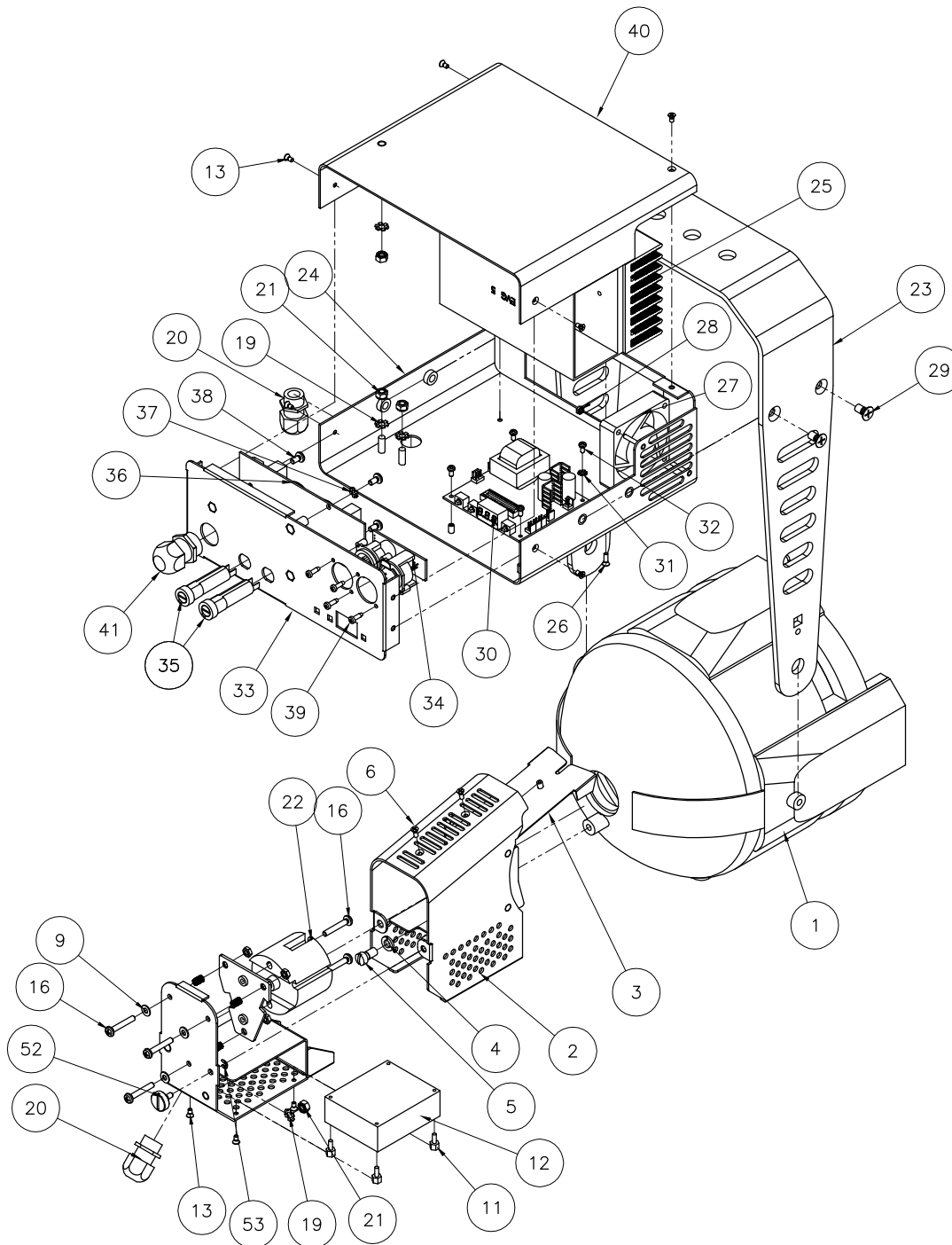


CHROMA-Q DAYLITE PAR



53	RETAINING WASHER DIN 6799-3.2	900-0087	1
52	SCREW RETAINING M4 (147)	900-0095	1
51	CABLE TIE 3/4x4 BLACK	900-0634	1
50	FUSE 12.5A (T)	900-0959	2
49	HARNESS 5-2 FILTER-PSU LINE	147-0024	1
48	HARNESS POWER IN	147-0023	1
47	HARNESS 6 FUSES-FILTER + PCB	147-0022	1
46	HARNESS 5-1 FILTER-PSU NEUTRAL	147-0021	1
45	HARNESS 4 FILTER-GROUND	147-0020	1
44	GROUND CHASSIS TO COVER	139-0013	1
43	HARNESS 3 PSU-PCB 24V	147-0018	1
42	HARNESS 1 PSU-PCB DIMMER	147-0017	1
41	STRAIN RELIEF PG11	900-5065	1
40	TOP PSU BOX DAYLITE PAR	147-0005	1
39	SCREW M3x10 PH PLPS BLK Plastite	900-0024	4
38	SCREW M4x8 PH PLPS Bik	900-0020	3
37	WASHER LOCK M4 EXT TH Zn	900-0209	3
36	FILTER 8A AK	900-0955	1
35	FUSEHOLDER SHOCK-SAFE	900-0958	2
34	PCB FILLED XLR5	147-0003	1
33	CAP FRONT PSU BOX	147-0006	1
32	SCREW M3x6 PH PLPS Bik	900-0017	4
31	WASHER LOCK M3 EXT TEETH	900-0211	1
30	PCB 147 COMPLETE MAIN SMT	147-0033	1
29	SCREW M6x12 FH PLPS BLK	900-0078	4
28	NUT HEX M3 COMBI Bik	900-0307	2
27	FAN ASSY 1X 60x60	900-1203	1
26	SCREW M3x10 PH PLPS Bik	900-0014	2
25	S/A POWER SUPPLY	147-0013	1
24	BOTTOM PSU BOX DAYLITE PAR	147-0007	1
23	YOKE DAYLITE PAR	147-0012	1
22	WASHER LOCK M4	900-0213	2
21	NUT HEX M5 COMBI Zn	900-0313	4
20	STRAIN RELIEF PG9	900-5145	2
19	WASHER LOCK M5 EXT TH Zn	900-0227	4
18	LAMPHOLDER G22	900-0957	1
17	NUT HEX M4 NYLOCK Bik	900-0334	3
16	SCREW M4x25 PH PLPS BLK	900-0067	5
15	PLATE ADJUSTMENT	147-0011	1
14	SPRING COMPRESSION 7 COILS	900-0632	3
13	SCREW M3x6 FH PLPS Bik	900-0004	10
12	HARNESS IGNITOR	147-0031	1
11	STD OFF M3 NUTx5, SCREW M3x8	900-0310	4
9	WASHER FLAT M4 Zn (9mmOD)	900-0205	3
8	COVER BULB CAP	147-0009	1
6	SCREW M3x8 FH PLPS Bik	900-0005	2
5	SCREW 1/4-20UNCx1/2 FL S	900-0077	1
4	WASHER LOCK M6	900-0214	1
3	BAFFLE CAP	147-0010	1
2	CAP SUPPORT S/A	147-0008	1
1	SOURCE 4 PAR MODIFIED	147-0002	1
ITEM	DESCRIPTION	PART#	QTY

Parts List