



# Chroma-Q™ Color Block 2™ LED Fixture

**Part No:  
CHCB4M2**

## S P E C I F I C A T I O N S H E E T

**V 1.3**

### DESCRIPTION

The fixture shall provide 4 single optic colour mixing RGBA LED cells. Each cell of the fixture shall provide a single colour optic across the spectrum.

The fixture shall provide a very efficient light output of around 530 Lumens and a CRI of 90.

The fixture shall offer a choice of HSI, RGBA, RGB (\*Magic Amber™) and RGBI (\*Magic Amber) control modes.

The fixture shall offer a full range of fixing accessories for wall, floor, truss, stand and vertical hanging units.

The fixture unit shall be suitable for creating a wide range of fixture configurations - e.g. battens, blinders, footlights, side fills, cyclorama floods, truss toners, discreet set piece lighting and interior architectural lighting.

The fixture shall feature a built-in stand-alone mode with real-time triggering.

The fixture shall have a powerful variable effects engine (V<sup>2</sup> technology).

The fixture shall be manufactured from extruded lightweight material.

### FEATURES

- CRI of 90 - for tungsten emulation.
- Enhanced colour range - create subtle theatrical hues.
- Single colour diffused optics virtually eliminate multicoloured shadows & offer camera friendly output.
- Exceptional colour brightness & light output levels.
- Advanced beam spreading technology - even colour mix across the beam.
- High quality of colour depth, superior colour rendition & a warmer colour range.
- All-purpose design - create custom LED lighting solutions for a wide variety of applications - e.g. touring, rental, TV, theatre, tradeshow & indoor architectural - using stock of one generic fixture.
- Modular construction with range of fixing accessories - easily configured as a wide variety of shapes.
- Broad choice of effects lighting options - e.g. battens, blinders, footlights, side fills, cyclorama floods, truss toners etc.
- Comprehensive range of fixing accessories available - for wall, floor, truss, stand & vertical hanging.
- HSI (Hue, Saturation & Intensity), RGBA, RGB (\*Magic Amber) & RGBI (\*Magic Amber) control - to enhance colour adjustment & easier control of light output.
- Variable Effects Engine (V<sup>2</sup> technology) - choice of dynamic colour & effects parameters.
- Heavy gauge anodised aluminium extrusion - lightweight but extremely robust.
- Additional protection around the lenses - for a truly road-proof fixture.
- Slimline design with cable management - perfect for discreet installation.
- Active cooling system - safe, efficient & optimal operation in most conditions.
- Lamp life of up to 25,000 hours - very low maintenance & cost of ownership.
- Choice of 5 unit & 30 unit power supplies - to suit smaller & larger systems.

\* Magic Amber is the term used for the unit's ability to bring in amber when mixing colours that require it.

### OVERALL SPECIFICATIONS

Net dimensions (without fixings):	Width (A): 250mm / 9.8" Height (B): 62mm / 2.4" Depth (C): 119mm / 4.7"
Net weight:	1.3kg / 2.8lbs
Shipping dimensions:	Width: 267mm / 10.5" Height: 76mm / 3" Depth: 127mm / 5"
Shipping weight:	1.3kg / 3lbs
Power consumption:	See power supply specification sheets
Power input rating:	48V DC
Control protocol:	ANSI E1.1 DMX-512A
Connector in/out:	XLR4
Max cable run:	60m / 200'
Cooling system:	Forced air
Construction:	Black anodised aluminium extrusion
Colour:	Black as standard. Also available in 8 other colours at an extra cost - see ordering information
LED cells:	4
LEDs per cell:	3 x RGBA single colour output
Total LEDs:	48
Control modes:	HSI, RGBA, RGB (*Magic Amber), RGBI (*Magic Amber) & stand-alone
Variable effects engine:	Yes
Effects parameters:	Colour spread, scroll, grouping, step, strobe, colour roll, speed, fade (up/down) & resolution
Lumen output:	Red 266 lumen Green 445 lumen Blue 56 lumen Amber 242 lumen White 532 lumen
CRI:	90
Optics:	Specialised close focus lens
Beam angle:	25° approx. (optional beam kits available, see website)
Beam distribution:	Asymmetrical direct illumination
CCT:	Adjustable 1,000 – 10,000K
Lamp life:	L70 up to 50,000 hours
IP rating:	IP20
Built-in hardware:	Interlocking system & quick release catches for connecting as battens. 2 x M10 nuts. See Accessories list below for other options
Approvals:	EN55103-1 & 2, IEC60950

### ORDERING INFORMATION

Model	Part No
Chroma-Q Color Block 2 - black	CHCB4M2
Chroma-Q Color Block 2 - pewter	CHCB4M2-1
Chroma-Q Color Block 2 - light bronze	CHCB4M2-2
Chroma-Q Color Block 2 - gold	CHCB4M2-3
Chroma-Q Color Block 2 - champagne	CHCB4M2-4
Chroma-Q Color Block 2 - red	CHCB4M2-5
Chroma-Q Color Block 2 - green	CHCB4M2-6
Chroma-Q Color Block 2 - blue	CHCB4M2-7
Chroma-Q Color Block 2 - polished mirror	CHCB4M2-8



[www.chroma-q.com](http://www.chroma-q.com)



# Chroma-Q™ Color Block 2™ LED Fixture

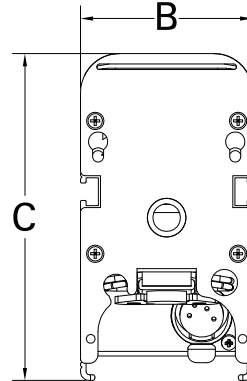
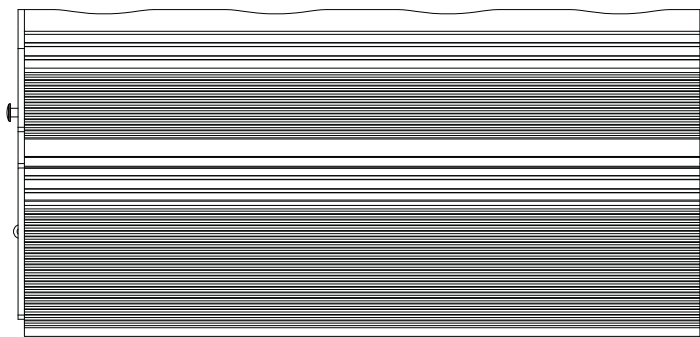
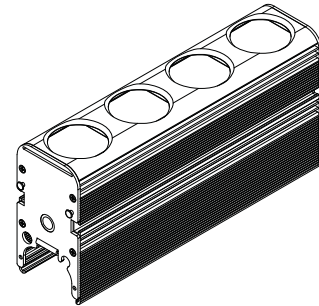
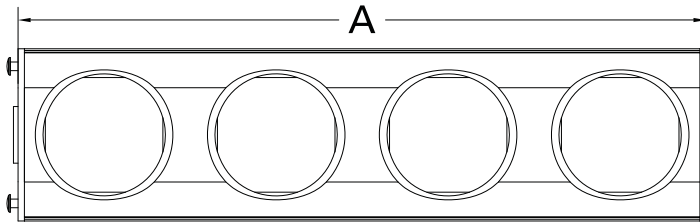
**Part No:  
CHCB4M2**

## S P E C I F I C A T I O N S H E E T

**V 1.3**

### ACCESSORIES

Model	Part No
Chroma-Q PSU for up to 5 units	CHCBPSU05
Chroma-Q PSU for up to 30 units	CHCBPSU30
Yoke / floor kit for single unit	CHCBCY
Yoke attachment	CHCBSY
Batten bracket kit for up to 5 units	CHCBBB
Blinder frame for 4 units	CHCBBF4
250mm / 9.8" LED pipe (single unit)	CHCBLP250
1.3m / 51.2" LED pipe (5 way batten)	CHCBLP1300
Hinge kit	CHCBHP
Wall bracket for single unit	CHCBWB
Single link cable for use in battens	MUCX4SDP-0.22
Other cable lengths available ('x' is length in m)	MUCX4SDP-x



\* Magic Amber is the term used for the unit's ability to bring in amber when mixing colours that require it.

[www.chroma-q.com](http://www.chroma-q.com)

All Chroma-Q LED products are licensed by Color Kinetics. Chroma-Q and all associated product names are recognised trademarks, for more information visit [www.chroma-q.com/trademarks](http://www.chroma-q.com/trademarks). The rights and ownership of all trademarks are recognised. The information contained herein is correct at the time of printing, however as we are constantly refining our product range we reserve the right to change the specification without notice. E60E.

