



Chroma-Q™ Color Block 2 Plus™ LED Fixture

**Part No:
CHCB4M2P**

S P E C I F I C A T I O N S H E E T

V 1.0

DESCRIPTION

The fixture shall provide 4 single optic colour mixing RGBA LED cells.
Each cell of the fixture shall provide a single colour optic across the spectrum.
The fixture shall provide a very efficient light output of around 750 Lumens and a CRI of 90.
The fixture shall offer a choice of HSI, RGBA, RGB (*Magic Amber™) and RGBI (*Magic Amber) control modes.
The fixture shall offer a full range of fixing accessories for wall, floor, truss, stand and vertical hanging units.
The fixture unit shall be suitable for creating a wide range of fixture configurations - e.g. battens, blinders, footlights, side fills, cyclorama floods, truss toners, discreet set piece lighting and interior architectural lighting.
The fixture shall feature a built-in stand-alone mode with real-time triggering.
The fixture shall have a powerful variable effects engine (V² technology).
The fixture shall be manufactured from extruded lightweight material.

FEATURES

- 40% more lumen output (750) compared to original Color Block 2 (530)
- Color Block 2 emulation mode
- Compatible with all Color Block 2 PSUs and accessories
- CRI of 90 – for tungsten emulation
- Extensive colour range - create subtle theatrical hues
- Single colour diffused optics - virtually eliminate multicoloured shadows & offer camera friendly output
- Exceptional colour brightness & light output levels
- Modular construction with range of fixing accessories - easily configured as a wide variety of shapes

OVERALL SPECIFICATIONS

Net dimensions (without fixings): Width (A): 250mm / 9.8"
Height (B): 62mm / 2.4"
Depth (C): 119mm / 4.7"
Net weight: 1.4kg / 3.1lbs
Shipping dimensions: Width: 267mm / 10.5"
Height: 76mm / 3"
Depth: 127mm / 5"
Shipping weight: 1.3kg / 2.8lbs
Power input rating: 48V DC
Power Connector in/out: XLR4
Data Connector in/out: XLR4
Max cable run: 60m / 200'
Power: External - See PSU specification sheets

* Magic Amber is the term used for the unit's ability to bring in amber when mixing colours that require it.

OVERALL SPECIFICATIONS

Cooling system: Forced air
Construction: Anodised aluminium extrusion
Colour: Black
Built-in hardware: Interlocking system & quick release catches for connecting as battens. 2X M10 nuts. See accessories list below for other options.
IP rating: IP20
Approvals: CISPR22/EN55022 & CISPR 24/EN55024, ICES-003:2004 / FCC Part 15 Subpart B: 2007
LED cells: 4
LEDs per cell: 3 x RGBA single colour output
Total LEDs: 48
Control modes: HSI, RGBA, RGB (*Magic Amber), RGBI (*Magic Amber) & stand-alone
Dimming curve: Theatrical
Variable effects engine: Yes
Effects parameters: Grouping, colour speed, colour range, step, and intensity effects.
Hot lumen output: CB2 Plus Mode: 750 lumen
CB2 Mode: 530 lumen
Red 370 lumen
Green 623 lumen
Blue 78 lumen
Amber 338 lumen
Optics: Specialised close focus lens
Beam angle: 25° (approx.)
Beam distribution: Asymmetrical direct illumination
CCT: Adjustable 1,000 – 10,000K
CRI: 90
Lamp life: L70 at 50,000 hours



www.chroma-q.com



Chroma-Q™ Color Block 2 Plus™ LED Fixture

**Part No:
CHCB4M2P**

S P E C I F I C A T I O N S H E E T

V 1.0

ORDERING INFORMATION

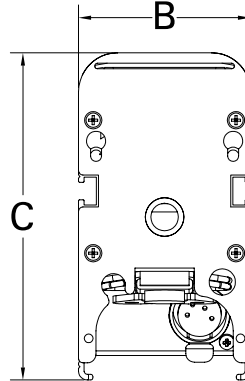
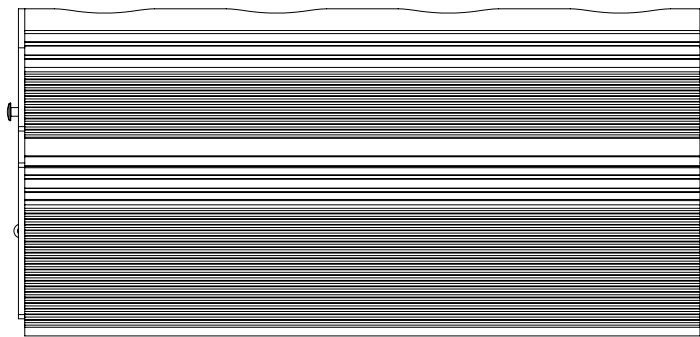
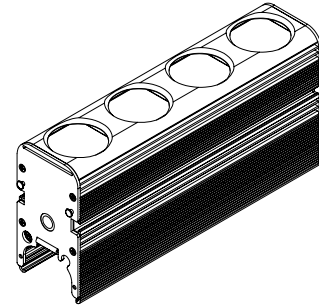
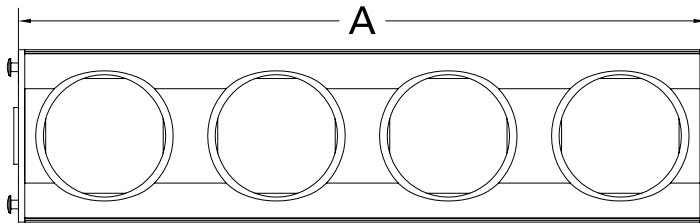
Model
Chroma-Q Color Block 2 Plus - black

Part No
CHCB4M2P

ACCESSORIES

Model
Chroma-Q PSU for up to 5 units
Chroma-Q PSU for up to 30 units
Yoke attachment
Yoke / floor kit for single unit
Batten bracket kit for up to 5 units
Blinder frame for 4 units
250mm / 9.8" LED pipe (single unit)
1.3m / 51.2" LED pipe (5 way batten)
Wall bracket for single unit
Single link cable for use in battens
Other cable lengths available ('X' is length in m)

Part No
CHCBPSU05
CHCBPSU30
CHCBSY
CHCBCY
CHCBBB
CHCBBF4
CHCBLP250
CHCBLP1300
CHCBWB
MUCX4SDP-0.22
MUCX4SDP-X



* Magic Amber is the term used for the unit's ability to bring in amber when mixing colours that require it.



www.chroma-q.com

Chroma-Q and all associated product names are recognised trademarks, for more information visit www.chroma-q.com/trademarks. The rights and ownership of all trademarks are recognised. The information contained herein is correct at the time of printing, however as we are constantly refining our product range we reserve the right to change the specification without notice. E80E.