



Chroma-Q™ Studio Force V 72 Variable White LED Battens

**Part No:
CHSFV72NF**

S P E C I F I C A T I O N S H E E T

V 1.0

DESCRIPTION

The fixture shall provide a very powerful 25,400 hot lumens output for washing large areas.

The fixture shall be suitable for creating a wide range of lighting applications, including key-lighting, uplighting, backlighting and wash applications.

The fixture shall provide 3,000K - 6,100K CCT variable white light output.

The fixture shall provide a CRI of 80.

The fixture shall provide a smooth, linear dimming curve.

The fixture shall feature a built-in stand-alone mode.

The fixture shall feature a built-in power supply.

The fixture shall be manufactured from extruded material.

FEATURES

- 3,000K - 6,100K CCT variable white
- Extreme output - 25,400 lumens
- Extremely smooth, uniform wash
- Theatrical grade dimming
- Ideal for TV, film, touring, exhibitions, corporate events and theatre
- 1.8m / 6ft length
- Camera friendly
- Laboratory calibrated 3200°K and 5600°K presets
- PowerCon input and output for easy daisy chaining of fixtures
- Optional cyc and border light lens media accessories
- Flat end plates for seamless wall-washing
- Built-in power supply
- Hidden quick release fixings
- Rugged extruded aluminium body

OVERALL SPECIFICATIONS

Net dimensions (without fixings): Width (A): 1,759mm / 69.25"
Height (B): 182mm / 7.25"
Depth (C): 177mm / 7"

Net weight: 22kgs / 48lbs

Shipping dimensions: Width: 1,855mm / 73"
Height: 305mm / 12"
Depth: 320mm / 12.5"

Shipping weight: 25kgs / 56lbs

Power input rating: 100-240V AC, 50-60 Hz, 700VA, power factor: better than .95

Measurements done with all LEDs at max. intensity. Measurements made at nominal voltage. Allow for a deviation of +/- 10%.

Control protocol: ANSI E1.11 DMX-512A, XLR5 in / through

Power connector in/out: PowerCon

Data connector in/out: XLR 5-pin

Max cable run: 60m / 200'

Cooling system: Forced - 2 fans

Construction: Black anodised aluminium extrusion

Colour: Black

OVERALL SPECIFICATIONS CONTINUED

Built in hardware: Quick release lever for tilt adjustment

IP Rating: IP20

Approvals CE: CISPR 22 :2006/EN55022 :2006 & CISPR 24 :1997/EN55024 :1998, ICES-003 :2004 & FCC Part 15 Subpart B: 2007

Approvals electrical: CSA C22. No. 166-M1983:R2008 UL 1573:2003; UL 8750

LED engines: 12

LEDs per engine: 12 (Cold White) / 12 (Warm White)

Total LEDs: 288

Control modes: 48 channels Dim48, 3 channels FxCTI, 2 channels WW/CW, 2 channels CTI, 1 channel Look Select, Master Standalone, Slave Standalone, Manual

Diming Curve: Theatrical

Variable effects engine: Yes

Effects parameters: Intensity Effects

Hot Lumen output: White 25,400 hot lumens @ 4,200K

CRI: ≥80

Optics: Specialised close focus lens

Beam angle: ~23°

Beam Angle With Optional Cyc Optic: 80 x 30° (approx.)

Beam Angle With Optional Border Optic: 60° (approx.)

Beam distribution: Asymmetrical direct illumination

CCT: 3,000K - 6,100K

Lamp life: L70 at 50,000 hours

Colour Gamut: Performance enhanced



www.chroma-q.com



Chroma-Q™ Studio Force V 72 Variable White LED Battens

Part No:
CHSFV72NF

S P E C I F I C A T I O N S H E E T

V 1.0

ORDERING INFORMATION

Model

Chroma-Q Studio Force V 72, body finished in black:

Part No

CHSFV72NF

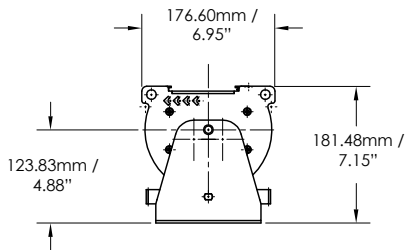
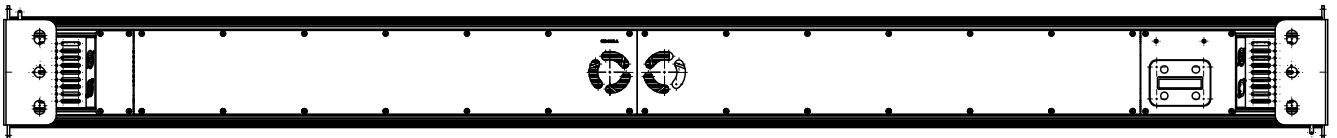
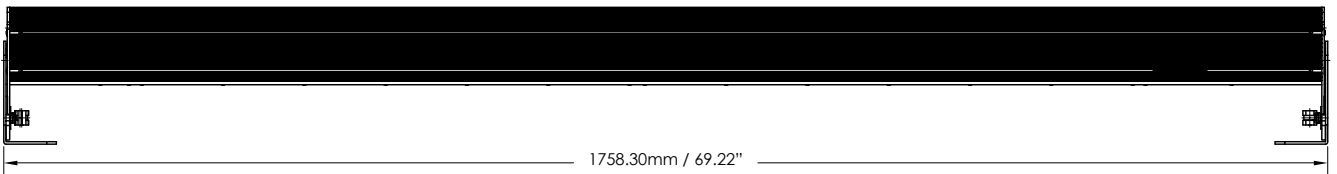
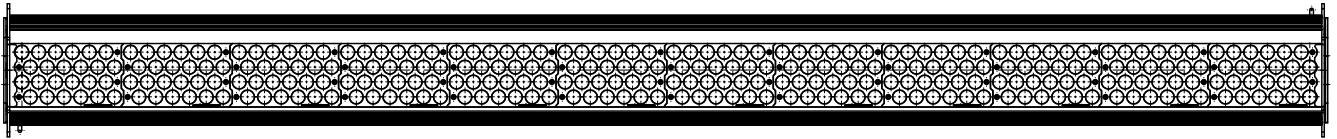
ACCESSORIES

Model

Chroma-Q Cyc Lens For Force 72
Chroma-Q Border Light Lens For Force 72
Chroma-Q Half Snoot For Force 72

Part No

CHCFCL72
CHCFBL72
CHCFHS72



www.chroma-q.com

All Chroma-Q LED products are licensed by Color Kinetics. Chroma-Q and all associated product names are recognised trademarks, for more information visit www.chroma-q.com/trademarks. The rights and ownership of all trademarks are recognised. The information contained herein is correct at the time of printing, however as we are constantly refining our product range we reserve the right to change the specification without notice. E60E.