

Technical Bulletin No. 46

1 February 2016

Overview

The Chroma-Q original firmware Uploader has sometimes been reformatted by Windows. Download and run the app as described below to properly reformat your Uploader.

PRIORITY	MEDIUM - <i>advised, not required</i>
Description	Reformat Uploader
Product Name	Chroma-Q Uploader
AC Part	CHUSBLOADER
Model	155-1000
Serial Number(s)	306 131 368 and below
Cause(s)	In some instances, Windows reformats the Uploader
Solution	<i>Refer to instructions below</i>

INSTRUCTIONS

1. Download the “format.zip” from <http://www.chroma-q.com/support/software/format.zip> and extract the zipped files into a temporary folder in your PC.
2. Power and connect the Uploader to your PC.
3. Take note of the Drive location. (See example Figure 1 below “UPLOADER (F:)”)

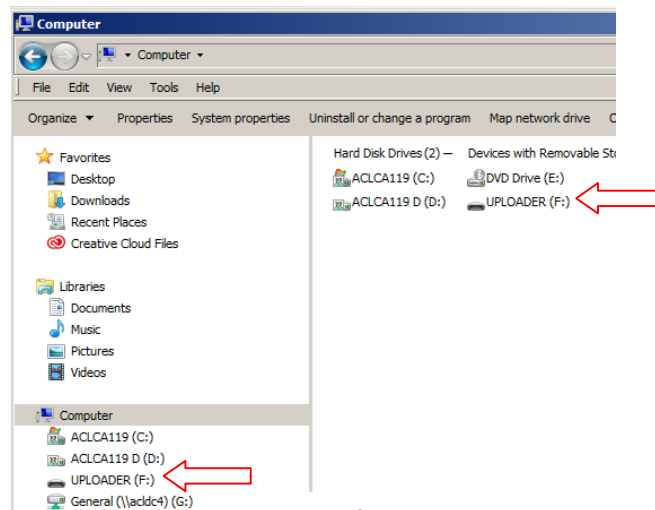


Figure 1

4. Open Notepad
5. In Notepad, go to the temporary folder with the stored format files. (See Figure 2 below)
6. Click on the “format.bat” (See Figure 2 below)

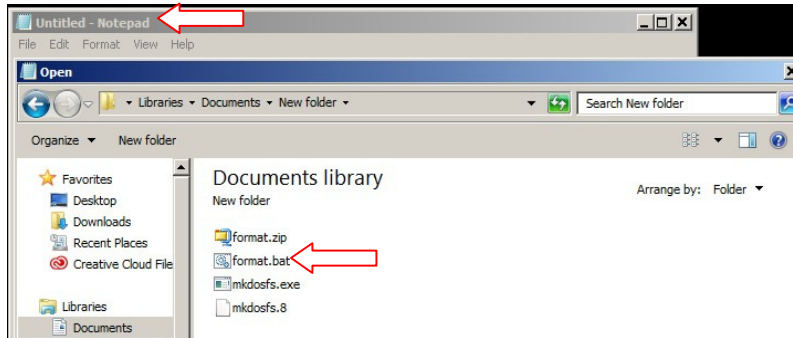


Figure 2

7. The location drive indicated in the file must match the actual drive location of the Uploader. (See example Figure 3, in this example the letter I must be changed to F)

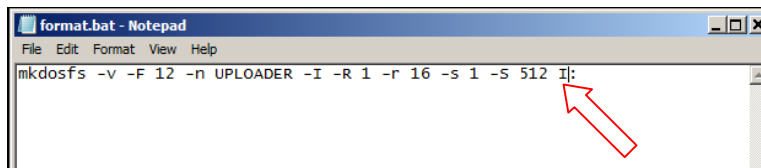


Figure 3

8. If the drive letter was changed Click File and Save.
9. Open the temporary folder with the saved format file then click the “format.bat” to re-format. (See Figure 4 below)

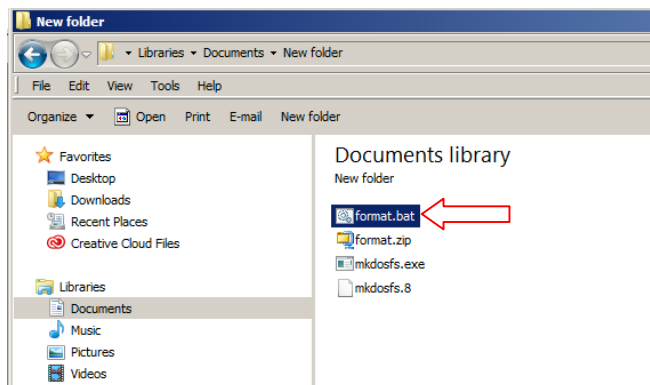


Figure 4